

AsTeRICS Academy Summer School for Assistive Technology:

Projects for persons with disabilities in Zimbabwe

Samantha Sibanda
Founder – Signs of Hope Trust





GREETINGS

Signs of Hope

2011



2016



Projects for persons with disabilities in Zimbabwe



Outline

- * Zimbabwe
- * Global picture of disability
- * Disability in Zimbabwe
- * Birth of the Signs of Hope Initiative
- * Our partners and current projects: assistive technology
- * Considerations
- * Conclusion





ZIMBABWE



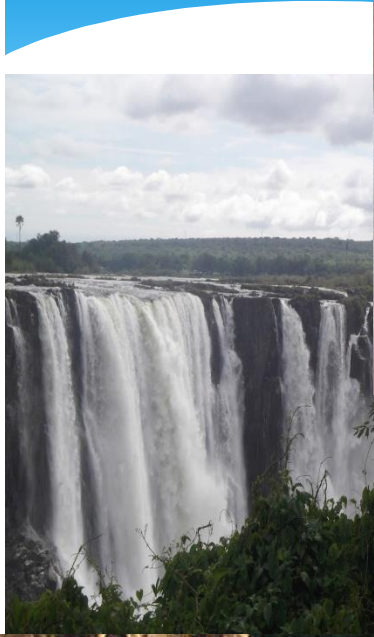
DISABLED



DISABLED PERSON IN ZIMBABABWE

ZIMBABWE





NEW ZIMBABWE.COM

Beautiful Zimbabwe

The global picture of disability



What is Disability?

In context of this presentation we will define disability as

“AN UMBRELLA TERM FOR IMPAIRMENTS, ACTIVITY LIMITATIONS AND PARTICIPATION RESTRICTIONS, DENOTING THE NEGATIVE ASPECTS OF THE INTERACTION BETWEEN AN INDIVIDUAL (WITH THE HEALTH CONDITION) AND THE ENVIRONMENTAL AND PERSONAL FACTORS “

WHO global disability action plan (2014 – 2021)_

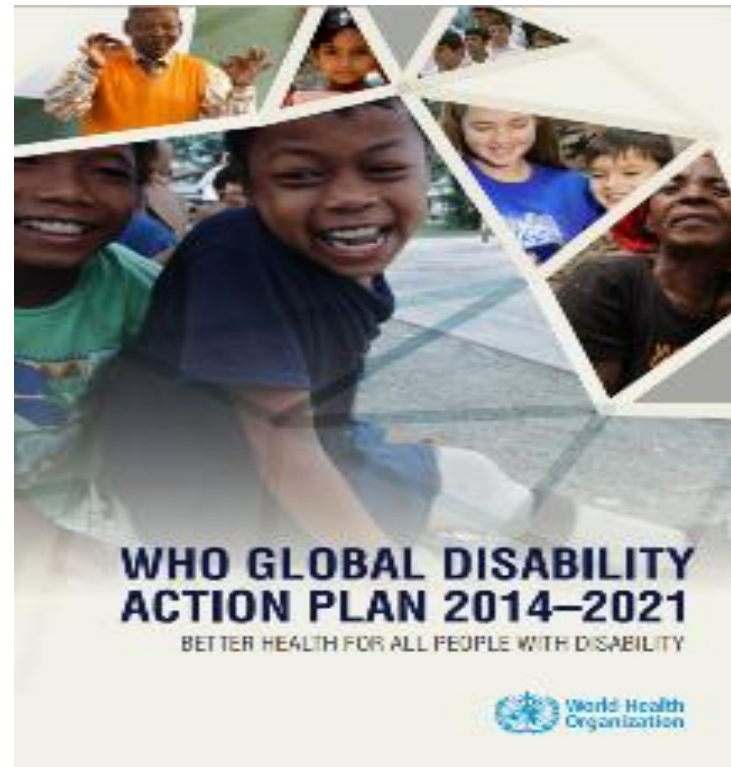
Global Picture

- * 1 in 7 people worldwide have a disability (about 15%)
- * 80% of those with disabilities are in developing countries
- * Data from 4 southern African countries revealed that only 26 – 55% of people received the medical rehabilitation they needed.
- ❖ Hearing aid production currently meets less than 10% of global need and less 3% of hearing aid needs in developing countries are met annually.
- ❖ It has been noted that poverty and disability go hand in hand. Most persons with disabilities live in poverty.

Global Picture

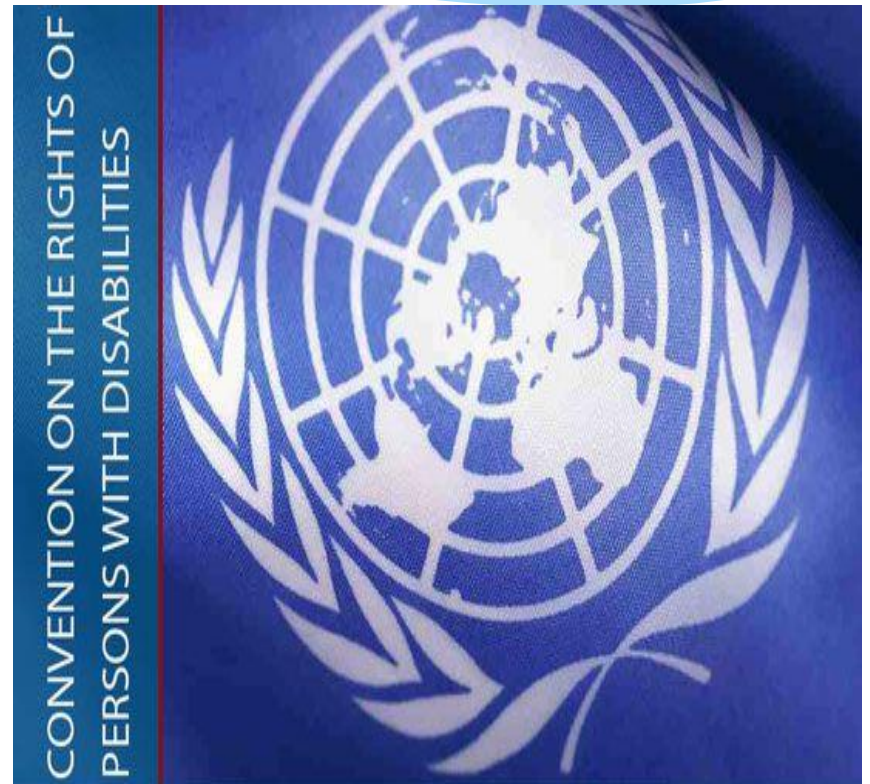
Even so, we commend good practices such

- * WHO initiated their Global Disability Action Plan (2014 – 2021) in which the second objective is to strengthen and extend rehabilitation, habilitation, assistive technology, assistance and support services and community based rehabilitation.



Global Picture

IN 2006 the convention on the rights of persons with disabilities was initiated and as of 30 March 2007, it was open for signatures



Disability in Zimbabwe



INACCESSIBILITY CHALLENGE



OTHER CRISIS



A few statistics/facts

- * Prevalence of disability in Zimbabwe is estimated to be 7.0% (about 900000 in a total population of 13 million)
- * Fewer individuals with disabilities access formal education
- * A large portion of those with disabilities are children and young people. A substantial amount of disability occurring early in life is preventable.
- * Physical impairments are the most common type
- * Around one in four of individuals with disabilities acquire their disability as children and 45% acquire the disability as children


The Signs of Hope Initiative





Network of artists with Paulino Masaka Loro – South Sudan



Public Discussions



FREE PUBLIC DISCUSSION: ALL WELCOME

SUPPORTED BY  

Signs of Hope:
The Arts & Disability
How do artists view and engage
with the disabled through their art?

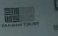
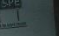
Speakers **Victor Kunonga**
Dudu Manhenga
Masimba Kuchera
Daniel Maphosa

Thu 9 May
5.30-7pm

BOOK CAFÉ

139 Samora Machel Ave, corner 6th Street, Harare
newbookcafe.harare@gmail.com

Moderator: **Thomas Deve**

GENDER FORUM DISCUSSION   

**"From Peace In The Home To Peace In The World:
Perspectives From
Persons With Disabilities"**

Speakers:
Soneni Gwizi (radio presenter and gender activist)
Jennifer Shumba and Thabani Mpofu (lawyer)
Moderator: Admire Zaya

Thu 28 Nov
5.30pm
FREE, All welcome

BOOK CAFÉ

139 Samora Machel Ave/6th Street | Tel: 086 440 666 22 | newbookcafe.harare@gmail.com

others

- * Training of computers – learning English, handwriting and speaking skills
- * We spear headed the commemorations of the UN International Day for Person with disabilities which was now forgotten in our country.
- * The Senator for persons with Disabilities was presentations together with other International Organisations such as UNICEF
- * We were recently a part of a conference to advocate for accessibility/ inclusion in the city of Harare

MIRACLE MISSIONS



AsTeRICS IN ZIMBABABWE



CONSIDERATIONS

* AsTeRICS IN ZIMBABWE

- * Miracle Missions and Signs of Hope – charity wing.
- * Worldlinks – business and rural outreach
- * University of Zimbabwe – academic
- * End users – King George, Jairos Jiri and Muscular Dystrophy Association



Considerations

- * MOBILE TECH BUS
- * Signs of Hope Trust has started registrations to offer free courses in computers using the flipmouse etc.
- * We foresee this as a big project, that will benefit many and open the door for more research in the field of assistive technology



conclusion



THANK YOU 😊

SOURCES/FURTHER READING

- * <http://www.who.int/disabilities/actionplan/en/>
- * <http://www.un.org/disabilities/convention/conventionfull.shtml> - article 9(accessibility), 19 (living independantly and being included in the community) and 20 (personal mobility)
- * <http://www.un.org/disabilities/documents/maps/enablemap.jpg> - united nations map of ratifications
- * [http://www.unicef.org/zimbabwe/National_Survey_on_Disability_2013\(1\).pdf](http://www.unicef.org/zimbabwe/National_Survey_on_Disability_2013(1).pdf) National disability survey in Zimbabwe
- * <https://www.ada.gov/> Americans with disabilities act
- * <https://www.facebook.com/MiracleMissionsTrust/?fref=ts> Miracle Missions
- * Other definitions of disability:

Preamble of Convention states:

'Disability is an **evolving** concept, and that disability results from the **interaction** between persons with impairments and attitudinal and environmental barriers that hinders full and effective participation in society on an equal basis with others'

Article 1 of the Convention states:

'Persons with disabilities **include** those who have long-term physical, mental, intellectual or sensory impairments which in interaction with various barriers may hinder their full and effective participation in society on an equal basis with others'